

**Anti-GPRC5B Antibody**  
**Catalog # AP53734****Specification**

---

**Anti-GPRC5B Antibody - Product Information**

Application	WB
Primary Accession	<a href="#">Q9NZH0</a>
Reactivity	Human
Host	Rabbit
Clonality	Polyclonal
Calculated MW	44795

**Anti-GPRC5B Antibody - Additional Information****Gene ID** 51704**Other Names**

RAIG2; G-protein coupled receptor family C group 5 member B; A-69G12.1; Retinoic acid-induced gene 2 protein; RAIG-2

**Target/Specificity**

Recognizes endogenous levels of GPRC5B protein.

**Dilution**

WB~~1/500 - 1/1000

**Format**

Liquid in 0.42% Potassium phosphate, 0.87% Sodium chloride, pH 7.3, 30% glycerol, and 0.09% (W/V) sodium azide.

**Storage**

Store at -20 °C.Stable for 12 months from date of receipt

**Anti-GPRC5B Antibody - Protein Information****Name** GPRC5B**Synonyms** RAIG2**Function**

G-protein coupled receptor involved in the regulation of cell volume.

**Cellular Location**

Cell membrane; Multi-pass membrane protein. Cytoplasmic vesicle membrane; Multi-pass membrane protein. Note=Localized in the plasma membrane and perinuclear vesicles

**Tissue Location**

Expression is high in kidney, pancreas, and testis, medium in brain, heart, prostate, small

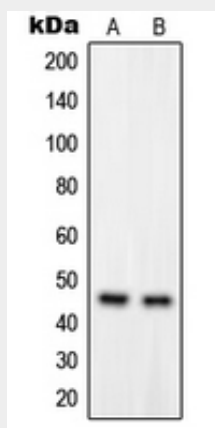
intestine, and spleen, low in liver, placenta, skeletal muscle, colon, ovary, and thymus, and not detectable in lung and peripheral leukocyte. According to PubMed:10945465, highly expressed in most brain areas examined, with the highest levels observed in corpus callosum, caudate nucleus, putamen, substantia nigra, thalamus, hippocampus, and spinal cord as well as in dorsal root ganglia (DRG). Expressed in glia limitans, ependymal cells, astrocyte cell bodies, the perivascular region in astrocyte endfeet, but not in neurons (PubMed:37143309). In the periphery, expression levels are relatively low, compared to the CNS, with the strongest expression detected in pancreas, testis, uterus, and stomach.

### Anti-GPRC5B Antibody - Protocols

Provided below are standard protocols that you may find useful for product applications.

- [Western Blot](#)
- [Blocking Peptides](#)
- [Dot Blot](#)
- [Immunohistochemistry](#)
- [Immunofluorescence](#)
- [Immunoprecipitation](#)
- [Flow Cytometry](#)
- [Cell Culture](#)

### Anti-GPRC5B Antibody - Images



Western blot analysis of GPRC5B expression in HUVEC (A), Jurkat (B) whole cell lysates.

### Anti-GPRC5B Antibody - Background

Rabbit polyclonal antibody to GPRC5B